

Astra Hybrid330

330W hybrid beam-spot light with 3.5-52° zoom and linear CMY

ORDER CODE: **ASTRAHYB330**



The **Astra Hybrid330** is a bright LED hybrid moving head that boasts exceptional power relative to its compact size, producing an array of breathtaking visual effects.

Its optical system offers a linear range from 3.5° to 52°, furnished with a sizable 140mm front lens. This unique combination enables an intense beam and homogenous spotlight, providing an exceptional lumen output and surpassing the evenness offered by arc-discharge fixture in its category.

The comprehensive features of the **Astra Hybrid330** encompass a variety of functions. These include aerial effects with a dense, parallel beam and sharp projection textures, pattern effects, linear CMY, three colour wheels, an animation wheel, dual overlapping prisms, frost, and two gobo wheels.

MAIN FEATURES

- 330W LED hybrid moving light
- Zoom range from 3.5° to 52°
- Full features with linear CMY, animation wheel, two gobos, three colours, two prisms, and frost

TECHNICAL SPECIFICATION

LIGHT SOURCE

- Source: 330 W high-power white LED
- CCT: 7.000
- Luminous flux: (3,5°) 8'158 lm - (52°) 11'684 lm
- Lux: (3,5°) 97'996 lx - (52°) 1'566 lx @5 m full
- Source life expectancy: > 30.000 h

OPTICS

- Zoom: 3,5° - 52 ° motorised linear zoom
- Lens diameter: 140 mm
- Lens type: HD anti-reflection lenses with achromatic coating
- Focus: motorised

COLOUR SYSTEM

- Colour mixing: CMY colour system on 3 gradually fading colour wheels
- CCT: on wheel 2.400 K and 3.200 K
- Colour wheel: 9 dichroic filters on 3 independent colour wheels
- Colour wheel: High CRI colour filters

DYNAMIC EFFECTS

- Control Resolution: 16-bit dimmer
- Animation wheel: animation wheel with CW and CCW rotation
- Rotating gobos: 8 rotating gobos + open, interchangeable, indexing
- Gobo size: outer: 20 mm - image: 16 mm - thickness: up to 3 mm
- Fixed gobos: 11 fixed gobos + open
- FX generator: 2 prisms overlap for spectacular aerial effects
- Circular prism: 8 f with bi-directional rotation, indexing
- Linear prism: 6 f with bi-directional rotation, indexing
- Frost: linear 0 - 100% frost filter

BODY

- Hardware on-board: sockets for quick-Lock Omega bracket (clamp not included)
- Pan angle: 540 °
- Tilt angle: 270 °
- Pan/Tilt resolution: bit 8 / 16-bit
- Feedback: automatic repositioning after accidental movement
- Body: aluminium structure with high-resistance polycarbonate cover
- Body colour: RAL 9004

CONTROL

- Protocols: DMX512, RDM, Art-Net, sACN, W-DMX
- DMX channels: 29 channel
- Wireless Control: included, LumenRadio Timo Fx DMX/RDM compatible with both CRMX (Lumen Radio) and W-DMX (Wireless DMX)
- RDM: RDM for remote monitoring and settings
- Display: LCD high resolution colour display with autoflip
- Firmware upgrade: yes, via USB - DMX interface (UPBOX2) not included or via USB pen drive
- Other: Ethernet pass through in case of PSU or Master PCB failure

ELECTRONICS

- Dimmer: linear 0 ~ 100% mechanical dimmer
- Dimmer curves: 4 selectable dimming modes available
- Strobe / shutter: 1 - 30 Hz, electronic
- Display battery: self-charging battery backup
- Operating temperature: -10° ~ +45°
- LED Control: flicker free frequency with adjustable PWM
- Selectable PWM: 600 ~ 50.000 Hz

ELECTRICAL

- Mains power supply: 100-240V - 50/60Hz
- Max power consumption: 517 W
- Output (at 230V): 4 units on a single power line
- Power factor: > 0,98

PHYSICAL

- IP rating: 20
- Cooling: combination of heat pipe cooling system and low noise fan
- Suspension and fixing: any position with quick-lock omega brackets
- Pan / tilt lock: for transportation and maintenance
- Signal connection: Amphenol XLR 5p IN/OUT connectors
- Data connection: Neutrik Art-Net RJ45 IN/OUT
- Power connection: Neutrik powerCON TRUE1 IN/OUT connectors
- Dimensions (WxHxD): 411x638x244 mm
- Weight: 21,6 kg

CERTIFICATIONS / APPROVALS

- Certifications / Approvals: CE, UKCA, RCM, cTUVus, FCC

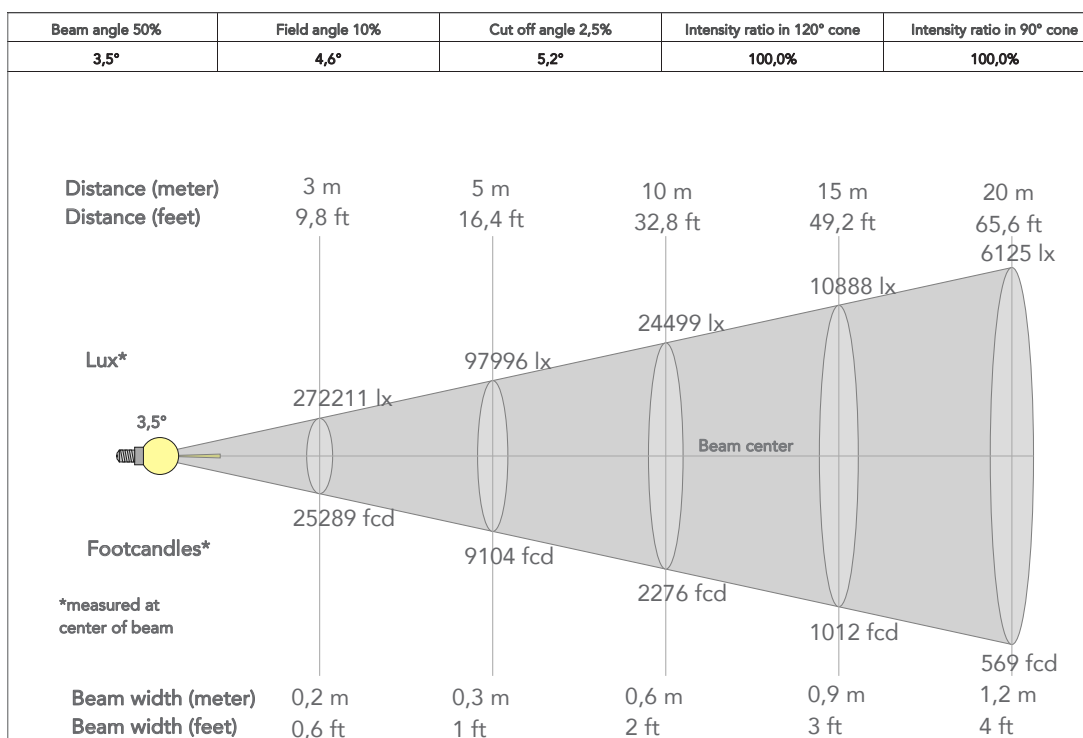
ACCESSORIES & RELATED PRODUCTS

- FCLASTRAP400 Flight case for 3 pcs of ASTRAPROFILE400
- AHYB330BAG1U Empty ABS case for 1 pc of ASTRAHYB330
- OS24 Quick-lock omega bracket.
- C6002B Slim aluminum clamp, 200kg loading, 48-51mm tubes, M10 bolt, Black
- RSR1235B Steel security cable for hanging bodies, inox steel shackle
- 9533FXWL03 Ass. 3x2.5mm TH07 cable, SHUKO plug, MENAC3FXW socket, L.3m
- 9513FXWL03 Ass. 3x2.5mm TH07 cable, 16A 3p 230V CEE plug, MENAC3FXW socket, L.3 m
- 958225L03 3x2.5mm TH07 Cable, 16A 3p PwCon MXW, 16A 3p PwCon FXW, L. 3m

- TOUR53415L03 Dmx cable HC5340. CANC5MXX XLR 5p->CANC5FX XLR (f) 5p, L.3m
- WSBBF1G5 BlackBox F-1 G5 transmitter, 2,45GHz & 5.2/5,8 GHz, DMX/RDM, 512Ch
- WSBBF1G6 BlackBox F-1 G6 transrec, 512ch, 2.45GHz, DMX&RDM, Bluetooth, G3, G4, G4S, G5, CRMX
- WSBBR512G5 BlackBox R-512 G5 receiver 512Ch, 2.45GHz & 5.8GHz, DMX/RDM optional
- WSBBR512G6 BlackBox R-512 G6 receiver 512Ch, 2.45GHz, DMX&RDM, Bluetooth, G3, G4, G4S, G5, CRMX
- LRAURORA Single Universe DMX/RDM transceiver with WiFi and Bluetooth
- LRLUNA Single Universe DMX transceiver with Bluetooth
- UPBOX2P5 Firmware uploader kit, USB IN, 5-pin XLR DMX OUT

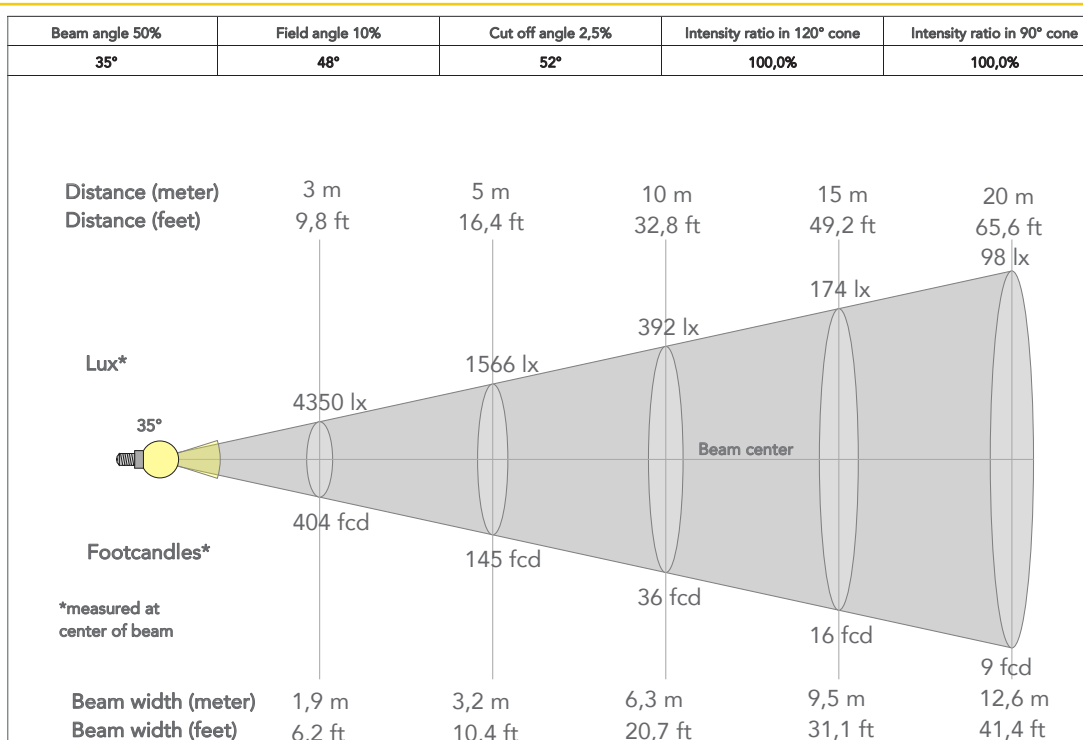
PRESET FULL ON

Beam angle 50%: 3,5°

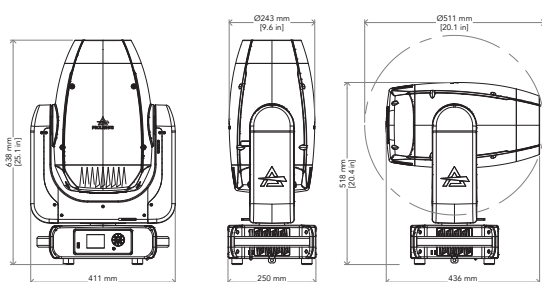


PRESET FULL ON

Beam angle 50%: 52°



TECHICAL DRAWINGS



CERTIFICATIONS / APPROVALS



Conforms to UL STD. 1573
Certified to CSA STD: C22.2 NO. 166

Visit our website
for specifications and
tech documentations

